

LTS forecast for 2015-2017 functional areas, based on 9 year trends

Compiled by Adam Chandler

Mon Feb 16 14:01:00 2015

How to read the reports

Reports were run for 13 categories of LTS operations. The categories were selected by Jim. The reports have the following parts:

1. R squared value of statistical significance of the 9 year trend. This tells us how much confidence we have about the trend (growth or decline) and the slope (steep or gradual). The reports are sorted in order of statistical significance (High, Moderate, Low). If Low, 2015-2017 forecast is omitted.
2. A plot of the previous 9 years of data.
3. If statistically significant, a forecast for the next three years based on the linear regression is included.

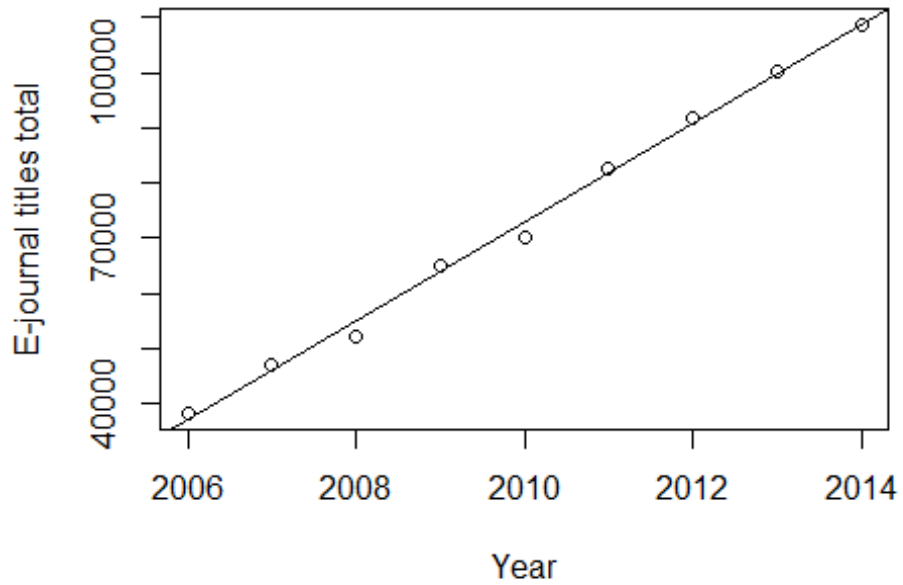
Dataset

	2006	2007	2008	2009	2010	2011	2012	2013	2014
Print serial issues received	82759	79307	74829	72125	59868	50424	46122	41968	40490
Fastcat	46629	48937	55408	52136	46155	43573	44225	42582	44682
Copy cataloging	18051	20608	21958	19292	18001	17501	16377	14311	16292
Total new items cataloged	115157	107029	107876	99128	87611	91756	77808	70956	79289
E-journal titles total	38323	47000	52200	65000	70100	82800	91740	100084	108702
E-book and other titles total	356151	356116	391897	518000	642103	680782	903397	940828	1112696
CBO	13978	14534	13150	11884	11059	8519	8097	7465	7062
Pamphlets	15325	12800	12427	12828	9941	10997	8719	10243	11687
Plating	101889	88463	81149	NA	82272	76895	69858	69779	72825
Marking	92887	99845	96961	NA	93039	87892	78132	80387	83952
Record maintenance	45983	58699	31747	39415	22639	47440	36284	14217	NA
Withdrawals titles	22340	13096	7929	4390	6686	7217	4867	5828	NA
Transfers titles	21002	10711	3975	1124	2305	1606	1305	802	NA

High statistical significance

E-journal titles total

R squared value: 1

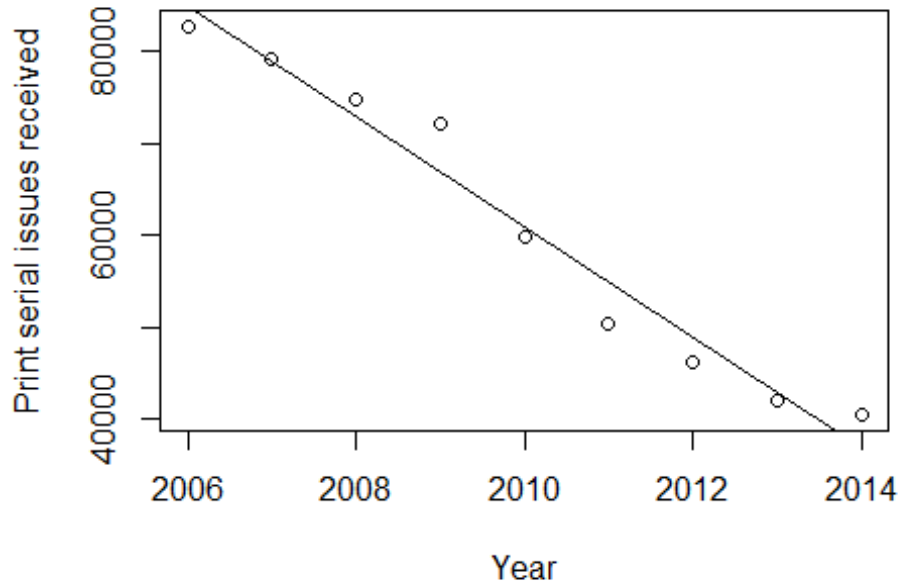


Forecast

year	expected fit	possible lower range	possible upper range
2015	117687	112617	122758
2016	126648	121282	132014
2017	135609	129913	141305

Print serial issues received

R squared value: 0.96

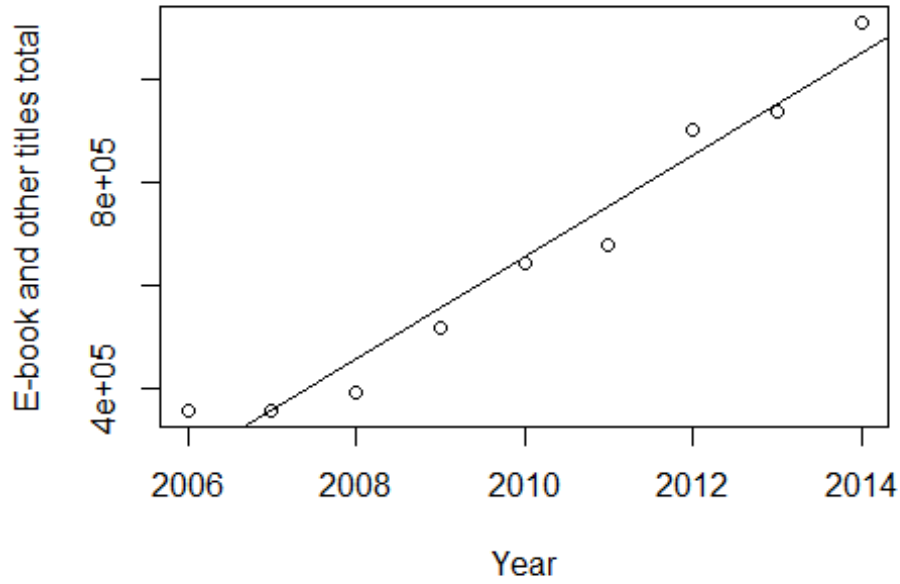


Forecast

year	expected fit	possible lower range	possible upper range
2015	30860	21082	40637
2016	24856	14508	35204
2017	18853	7869	29836

E-book and other titles total

R squared value: 0.95

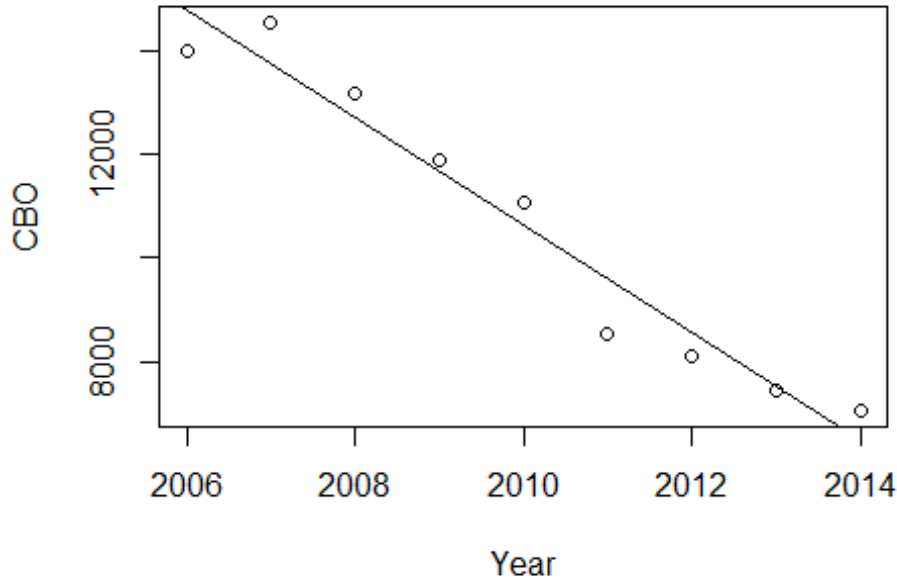


Forecast

year	expected fit	possible lower range	possible upper range
2015	1152949	971074	1334825
2016	1252384	1059905	1444863
2017	1351819	1147517	1556121

CBO

R squared value: 0.94

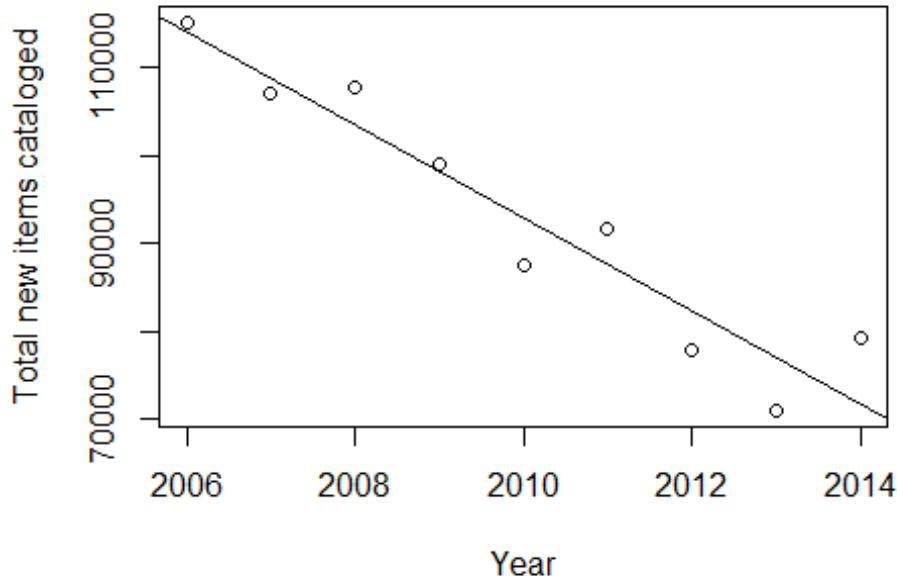


Forecast

year	expected fit	possible lower range	possible upper range
2015	5444	3406	7481
2016	4404	2248	6561
2017	3365	1077	5654

Total new items cataloged

R squared value: 0.89

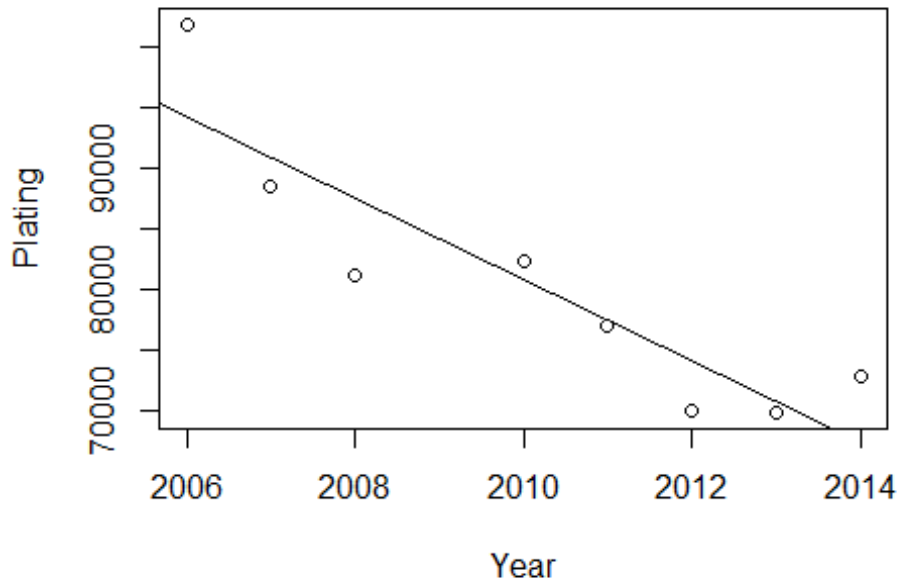


Forecast

year	expected fit	possible lower range	possible upper range
2015	66357	51382	81332
2016	61037	45189	76885
2017	55717	38895	72538

Plating

R squared value: 0.78

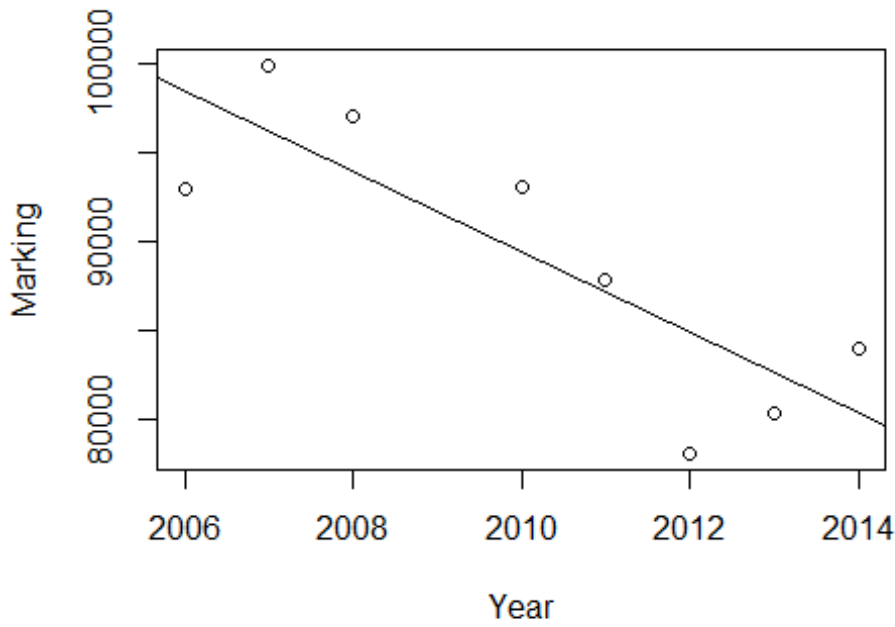


Forecast

year	expected fit	possible lower range	possible upper range
2015	63964	48539	79389
2016	60595	44275	76915
2017	57225	39903	74547

Marking

R squared value: 0.65



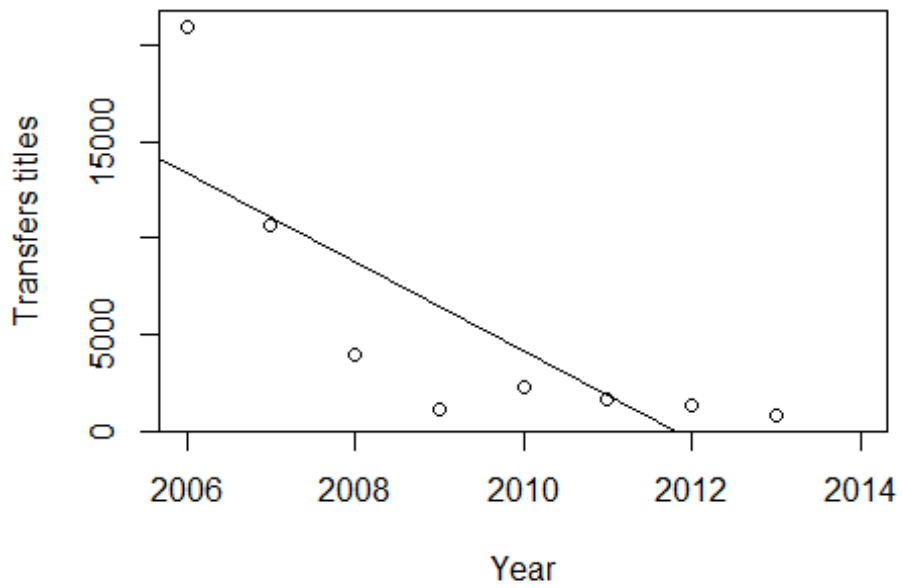
Forecast

year	expected fit	possible lower range	possible upper range
2015	78123	64000	92245
2016	75863	60921	90806
2017	73604	57745	89464

Moderate statistical significance

Transfers titles

R squared value: 0.57

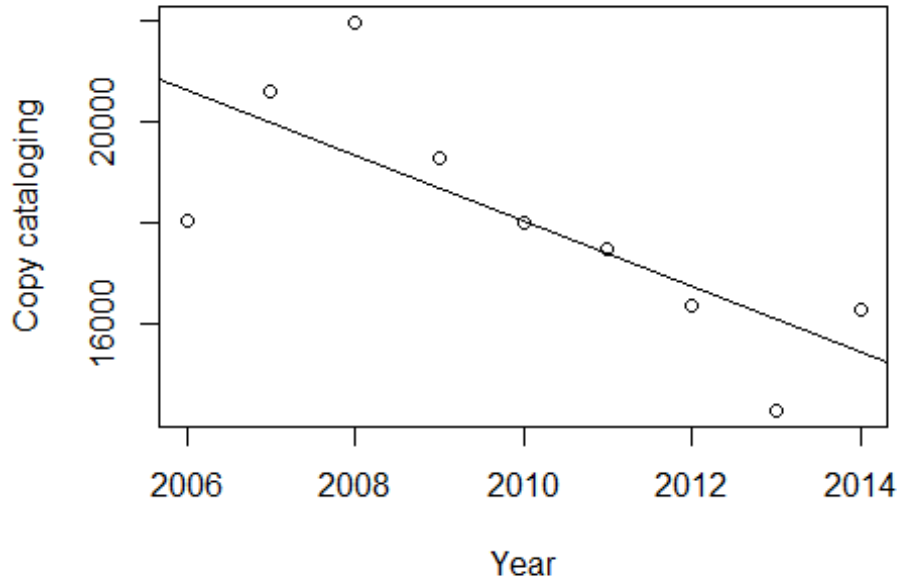


Forecast

year	expected fit	possible lower range	possible upper range
2015	-7372	-22782	8038
2016	-9686	-26246	6874
2017	-11999	-29808	5809

Copy cataloging

R squared value: 0.52

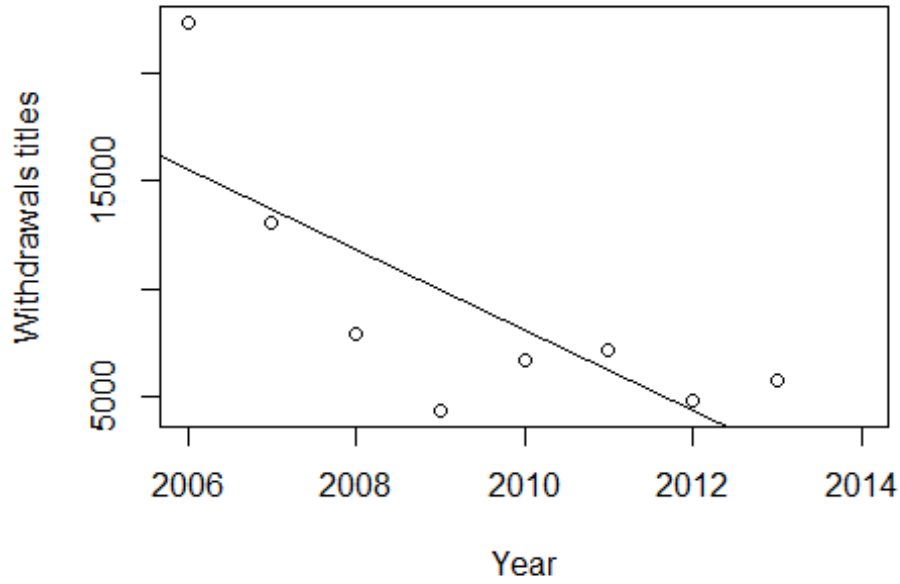


Forecast

year	expected fit	possible lower range	possible upper range
2015	14803	10073	19534
2016	14155	9149	19162
2017	13507	8194	18821

Withdrawals titles

R squared value: 0.51

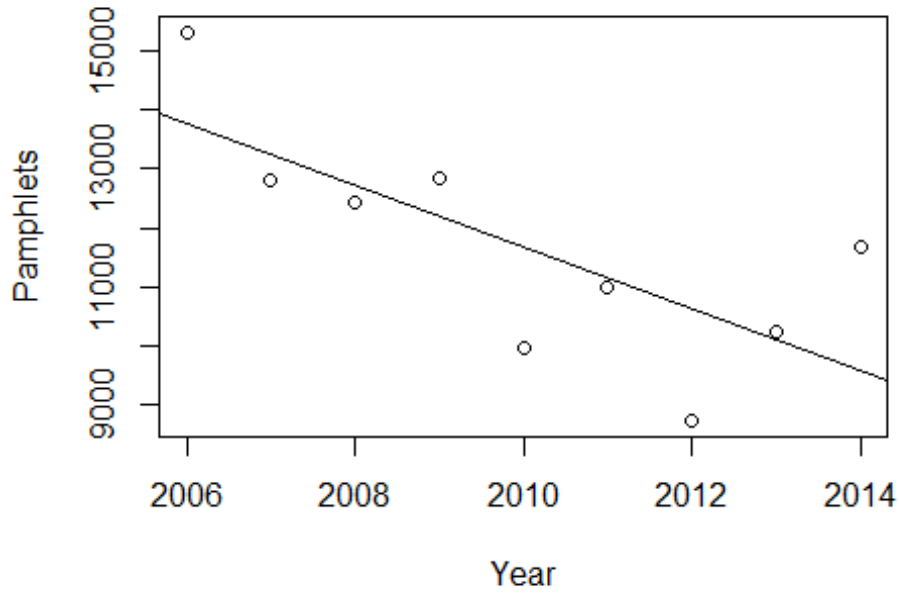


Forecast

year	expected fit	possible lower range	possible upper range
2015	-1207	-15236	12821
2016	-3071	-18147	12004
2017	-4935	-21147	11277

Pamphlets

R squared value: 0.47



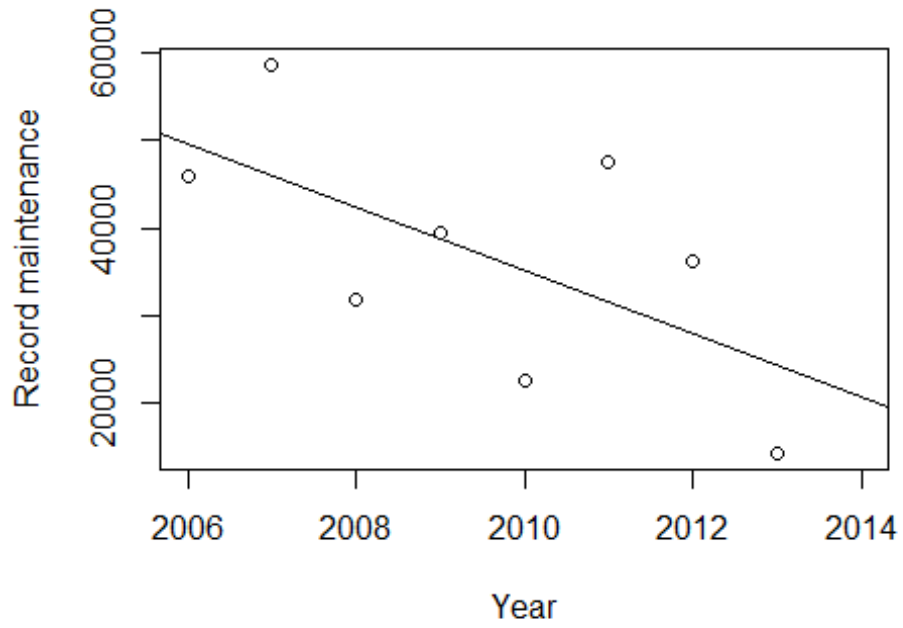
Forecast

year	expected fit	possible lower range	possible upper range
2015	9040	4873	13208
2016	8516	4106	12926
2017	7992	3310	12673

Low statistical significance

Record maintenance

R squared value: 0.29



Fastcat

R squared value: 0.29

